

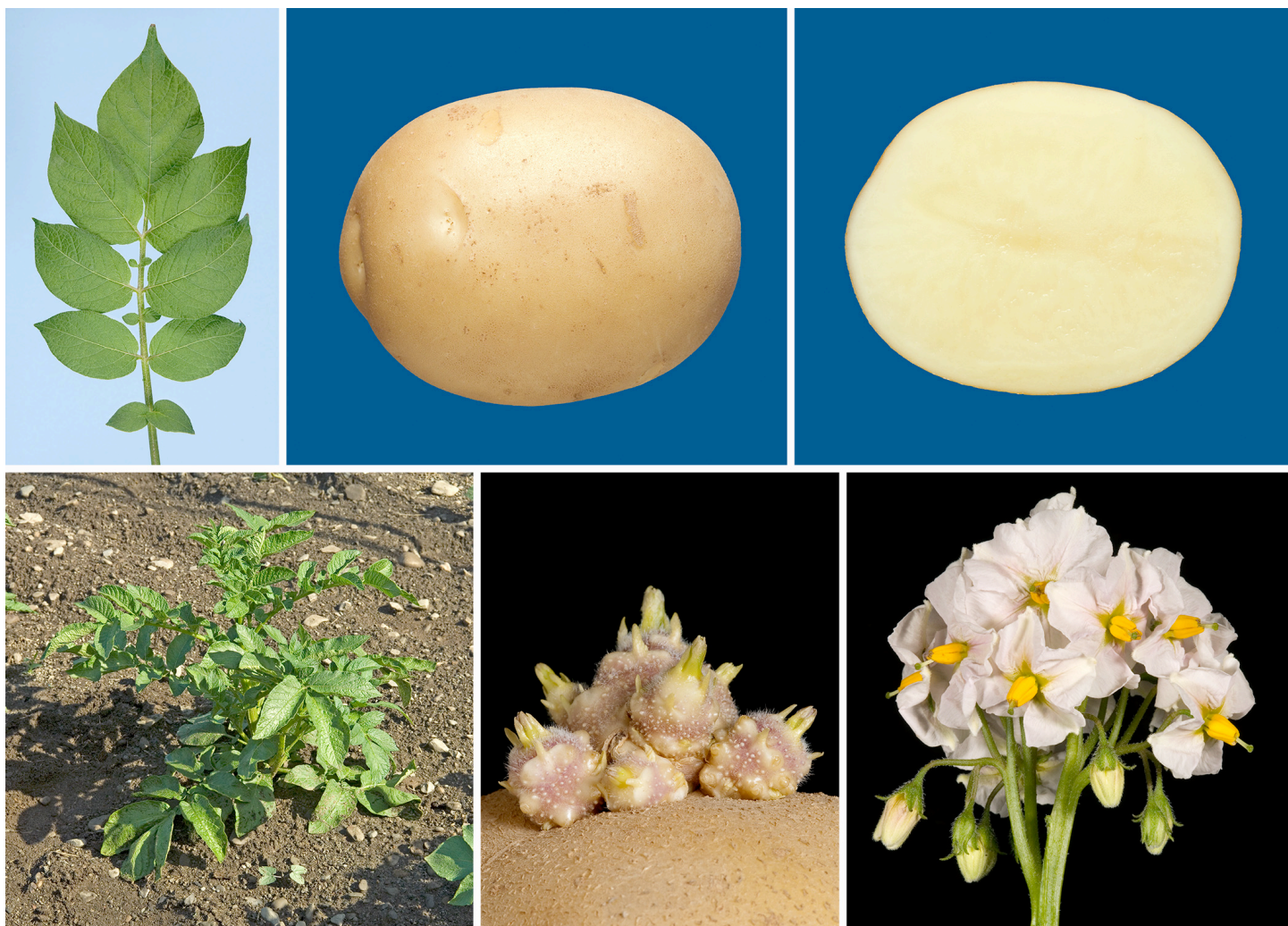
# WANETA

**Pedigree:** The cross was made in 1998. The female was Marcy and the male was NY115. Grandparents are Atlantic, Q155-3, Pike and NY88. Waneta was first evaluated as Y18-16, then as NY138. Waneta is named after one of a pair of twin lakes in upstate New York.

**Market Features:** Waneta is a chipping variety that produces oblong tubers with slightly to moderately textured skin. Waneta can also be grown as tablestock, as tubers have an attractive shape and do not darken or slough significantly after boiling. Tubers exhibit few external defects, but large tubers have shown 5-10% hollow heart in most trials. Specific gravity has averaged about 0.010 less than Atlantic in 36 trials. Chip color out of cold storage has been excellent, comparable to or better than Snowden in most trials.

**Production Features:** Late season maturity. Full season yield is good, averaging 95% of Atlantic in 35 upstate NY trials. Eight to nine inch spacing and 150 pounds of nitrogen/acre are recommended. Tuber size is similar to Atlantic. Tuber dormancy is quite long, about six weeks longer than Atlantic. Vines sometimes emerge slowly, but quickly catch up to other cultivars.

**Reaction to Diseases:** Good resistance to common scab. Resistant to golden nematode race Ro1.



Developed with support from New York State Department of Agriculture & Markets, USDA/ARS, USDA/APHIS, USDA/NIFA, New York and Pennsylvania Potato Growers. Evaluation assisted by NE1031. An application has been filed for PVP.