

THE TECHNOLOGY

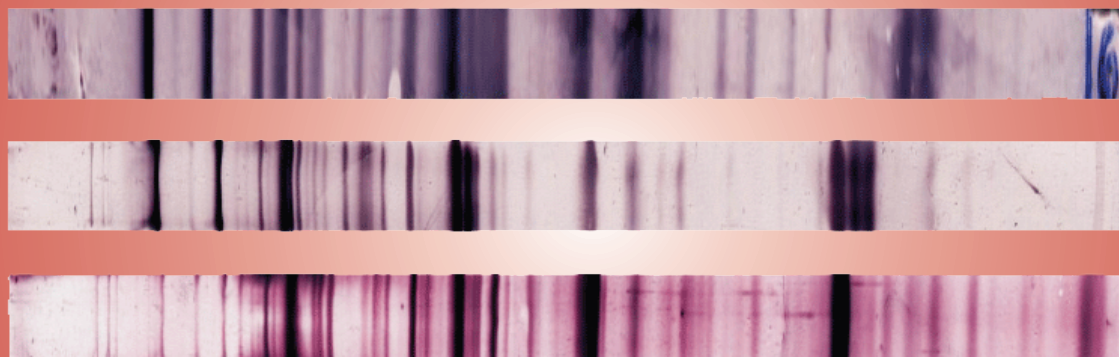
The assay involves immobilizing a wild type or recombinant effector protein or binding domain on a solid support, incubating the effector with cell lysates, and determining the amount of bound Ras with antibodies. The assay can be used in research or drug discovery, and also may have applications in detecting cancer.

Patent	US 6,300,081
Issued	Oct 9, 2001
Inventors	Stephen Taylor & David Shalloway
Licensees	Active Motif, Inc. Cytoskeleton, Inc. Millipore Corporation

THE PRODUCT

Ras Activation Assay

The Ras switch operates by alternating between an active, GTP-bound state and an inactive, GDP-bound state. The assay uses the Ras-binding domain (RBD) of the Ras effector kinase Raf1. The Raf-RBD domain has been shown to bind specifically to the GTP-bound form of Ras proteins. The assay provides a simple means of quantitating Ras activation in cells. The amount of activated Ras is determined by a western blot using a Ras specific antibody.



THE LICENSEES



Cytoskeleton, Inc.
Helping advance science, one protein at a time.

